

Canon



CORPORATE SOLUTIONS



imageRUNNER®
3030 / 3025


meap
POWERED BY I

CORPORATE SOLUTIONS

BUILT FOR THE DEPARTMENT, DESIGNED FOR THE INDIVIDUAL

Next-generation imageRUNNER technology delivers document production efficiency that can be personalized for every user.



 **imageRUNNER®**
3030 / 3025

Canon imageRUNNER systems have been known for their innovation and versatility. Now Canon takes this concept one step further with a new element of personalization to truly meet the individual workflow needs of every user in your office.

The imageRUNNER 3030/3025 systems deliver exceptional performance to serve as complete document production, storage, and distribution solutions for small offices and busy workgroups, all in a compact, convenient design.

These next-generation, advanced Canon imageRUNNER devices provide superior productivity and are infused with powerful tools that allow you to customize your workflows. Plus, with a host of data storage and security advancements, you can rest assured that your confidential information is protected.

BUILD A PERSONAL RELATIONSHIP FOR EVERY ENVIRONMENT

Network-ready in a compact design, the Canon imageRUNNER 3030/3025 systems provide unmatched configuration versatility to meet the needs of any office.

BASIC MULTIFUNCTION PERFORMANCE

At speeds of up to 30 or 25 pages per minute (letter), these space-saving configurations are models of efficiency for small office environments seeking to consolidate multipage digital copying, scanning, faxing, and document storage into a single solution.



SHARED NETWORKED RESOURCE

Growing workgroups with rising volumes can add paper capacity and internal finishing capabilities without occupying more space. Add optional network printing to enable authorized users to access the device as a shared printer and watch productivity soar.



COMPLETE COMMUNICATIONS HUB

Larger departments can bring total document production capabilities in-house with support for booklet finishing and a high-capacity paper supply for nonstop productivity. Advanced workgroups can add electronic document distribution to transform the Canon imageRUNNER 3030/3025 solutions into multifunction powerhouses.



EMPOWER EVERY MEMBER OF YOUR OFFICE

Advanced features with simple operation and easy maintenance for unequalled business performance.

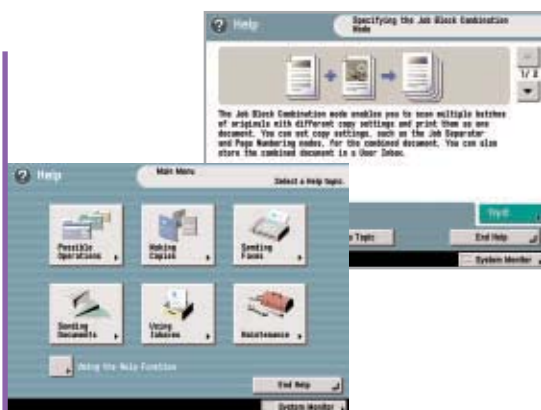
The imageRUNNER 3030/3025 systems are powered by Canon's advanced imageCHIP (Concurrent Hyper Intelligent Platform) system architecture for superior productivity and the tightest possible integration with your existing network infrastructure. Its high speed and bandwidth deliver exceptional performance with the power to execute simultaneous copying, printing, scanning, sending, and faxing to support multiple users in busy corporate environments.

Whether standing at the device or controlling it remotely from a connected workstation, the imageRUNNER 3030/3025 systems help simplify operation and ensure that each user properly completes every job the first time.



User-Friendly Control Panel

Realize the maximum value from your imageRUNNER devices through the systems' low total cost of ownership. These ENERGY STAR[®] qualified models employ Canon's RAPID Fusing System[™] technology to help keep power consumption to a minimum while providing near-instant warm-up and fast print times to keep busy workgroups moving. High-yielding supplies deliver on the promise of minimal end-user maintenance and maximum system uptime.



Interactive Help Menus



"Set-On" Toner Bottle

ADVANCED DOCUMENT PRODUCTION AND STORAGE

Versatile copy, storage, and print features bring more document production flexibility and control than ever before.

BOOST COPYING PRODUCTIVITY

Digital copy features like Job Block Combination enable the production of complex documents by scanning multiple batches of originals saved with different settings. Environments with more than one imageRUNNER 3030/3025 system in place can double their productivity with Cascade Copy. Users can output sets directly at the point-of-need with Remote Copy. Expert users can further boost efficiency with the Express Copy UI, a short-layered user interface that displays all basic copy settings on one screen to speed job programming.



Express Copy Menu

STREAMLINE DOCUMENT STORAGE TASKS

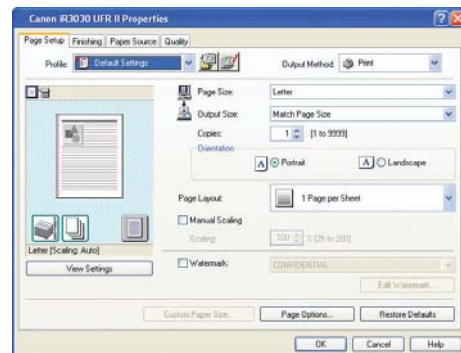
Leverage the power of the systems' Mail Box feature as a great solution for departments requiring the frequent reprinting of forms and static documents. Personalize each Mail Box with a user name, password, and document deletion period. The new Copy & Store and Store & Print functions streamline workflows by executing multiple tasks in one operation while ensuring that a first-quality digital original is automatically archived.



Mail Box Menu

PRINT WITH CONFIDENCE

Activate the optional UFR II/PCL Printer Kit-S1 to utilize the imageRUNNER 3030/3025 devices as shared network printers. This embedded print controller supports PCL 5e/6, plus Canon's proprietary UFR II (Ultra Fast Rendering) for exceptional printing performance. Users who prefer PostScript workflows can add the optional PS Printer Kit-S1.* Superior image quality at maximum speed is assured with up to 2400 x 600 dpi enhanced print resolution. Every user can easily produce professional-looking documents with point-and-click access to a full range of image, paper, and document finishing features right from the desktop.



UFR II Print Driver

*Provides support for PostScript® 3™ Emulation.

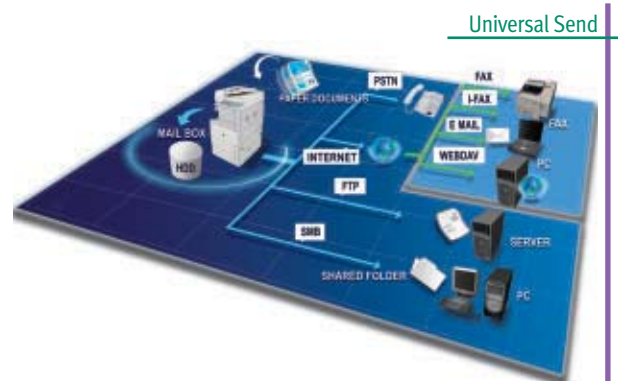
COMMUNICATE WITH CONFIDENCE TO ONE AND ALL

Leverage the power of digital technology to access, collaborate, and share information from anywhere.

The Internet-ready imageRUNNER 3030/3025 systems can be equipped with a host of innovative features that support information sharing. Start with easy-to-use TWAIN-scanning for basic image capture needs. The bundled Canon Network ScanGear utility easily transforms hard-copy images into digital files and sends them to a connected PC. Add Super G3 Fax with support for one or two phone lines, as well as PC Fax capability for convenient faxing from the desktop.

Raise your communication capabilities to another level with Canon's Universal Send technology. Send digital documents to any network destination—e-mail/I-fax addresses, network folders and databases, and local Mail Boxes—all in one simple operation in popular TIFF or PDF format. Users can choose destinations from the system's Address Book or manually enter ad hoc destinations at the device. Larger departments can tap the power of LDAP server capabilities for accurate, authorized recipient address search and selection.

As the needs of corporate users continue to evolve, so does Universal Send with optional features that can be personalized for every environment. The Searchable PDF feature* enables fast keyword searches and information extraction, while Encrypted PDF** adds a layer of protection to files for peace of mind. The Digital Device Signature Mode** and Digital User Signature Mode*** options provide traceability by verifying which unit and user scanned the document.



Universal Send Menu

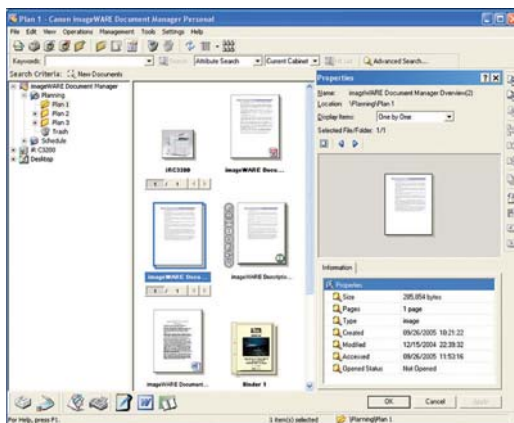
*Requires Universal Send Kit-G1 and Universal Send Searchable PDF Kit-A1.

**Requires Universal Send Kit-G1 and Universal Send PDF Security Feature Set-A1.

***Requires Universal Send Kit-G1 and Digital User Signature PDF Kit-A1.

EXTEND DOCUMENT DISTRIBUTION TO THE DESKTOP

The imageRUNNER 3030/3025 systems, coupled with Canon's imageWARE™ Document Manager Personal software, provide powerful tools to organize and manage files through remote workstations. Every PC serves as a virtual extension of the document management system with the ability to archive, edit, retrieve, and manipulate documents stored in the devices' Mail Box feature right from the desktop. Users can build complex documents in a simple drag-and-drop workflow for easy use, and then distribute scanned files to any destination.



imageWARE Document Manager Personal

INTERNET-READY TO MAXIMIZE THE POWER OF THE WEB

Eliminate all barriers to efficient Web-based information sharing. The Web-based Distributed Authoring and Versioning (WebDAV) protocol helps facilitate employee collaboration. Team members can communicate from remote locations by scanning and securely sending documents from a Canon imageRUNNER 3030/3025 system to a shared storage service over the Internet.*

Access to global information is at your fingertips with Canon's Web Access Software option.** This option transforms the imageRUNNER 3030/3025 devices into information retrieval kiosks within your own environment. Browse the Web or corporate intranet sites directly at the device's full-color touch-panel display, and then view and print pages right at the device with the desired settings.



Web Access Software

*Requires Universal Send Kit-G1.

**Requires the imageRUNNER 256 Expansion RAM to display Web flash content. Requires the UFR II/PCL Printer Kit-S1 for printing functions. Add the PS Printer Kit-S1 if printing PDF files.

COMPREHENSIVE CONTROL ACROSS ALL DEVICE FUNCTIONS

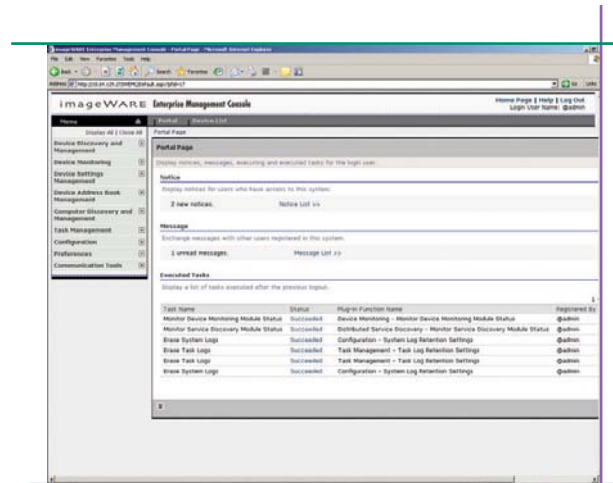
Easy to install and manage, the imageRUNNER 3030/3025 systems

offer precise control over device capabilities.

MANAGE SYSTEM SETTINGS

Canon's imageWARE Enterprise Management Console (EMC) is a Web-based utility that facilitates centralized management of networked devices. Versatile and scalable, imageWARE EMC enables remote management of device settings, discovery of new devices using automated tasks, and device error notification via e-mail. Specify which users have access to the device and its functions by setting restrictions on port usage and acceptable MAC or IP address ranges. Administrators can also replicate device settings and copy Address Books to multiple devices through the Device Information Delivery function for easy management of devices across the network.

Once installed, authorized users and administrators can access the imageRUNNER 3030/3025 devices through a Web browser from a computer on the network. Canon's Remote UI utility provides the ability to check the status of the device, track the progress of jobs in queues, monitor paper and supply levels, access Mail Boxes, and edit Address Books.



imageWARE Enterprise Management Console

CONTROL ACCESS TO SYSTEM FUNCTIONS

Administrators can implement a number of methods to ensure that only authorized personnel can access the device and the data stored inside it. Track or limit system access to authorized users. Authentication schemes include Single Sign-On (SSO) using network accounts, Simple Device Log-In (SDL), and Department ID Mode.



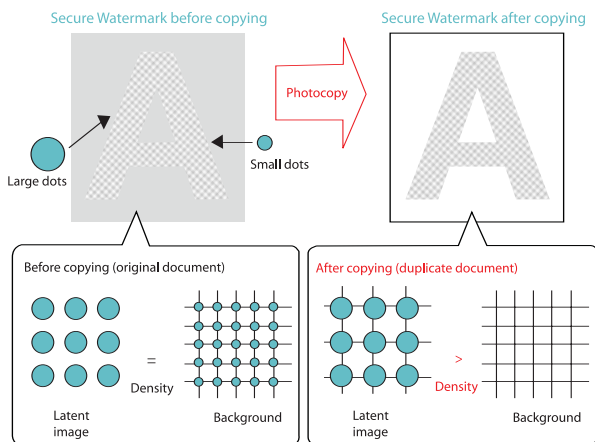
Remote UI

DATA PROTECTION WITH ACCESS FOR ALL AUTHORIZED USERS

Advanced security capabilities address today's needs for data protection.

ENHANCING SECURITY

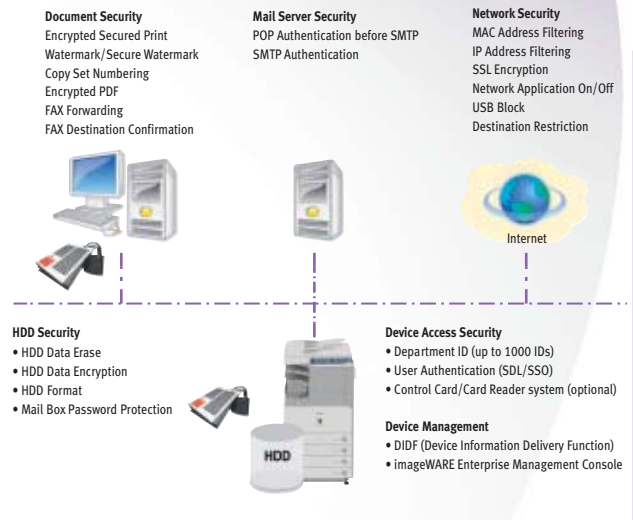
Once system access is granted, a number of standard and optional security measures go to work to keep confidential data secure. The Encrypted Secured Print option protects print data as it's sent over the network. The document can only be decrypted and printed after the correct password is entered at the control panel. When the Secure Watermark option is activated, the system embeds text and background patterns on printed documents that become visible if the page is reproduced, deterring users from copying sensitive information.



Secure Watermark is designed so that the hidden text appears when the document is copied.

Secure Watermark

For highly sensitive environments dealing with classified data, the HDD Data Encryption option provides additional security by encrypting data before it is written to the hard disk drive, and has achieved Common Criteria (CC) Certification. For the ultimate in data protection, when the optional HDD Data Erase Kit is added the device can be set to automatically overwrite previously stored data.



Device Management and Security Overview

MAINTAINING ACCESSIBILITY

The imageRUNNER 3030/3025 systems support a number of solutions that go even further to provide easy access for every authorized user. At the device, ease-of-use starts with the easy-to-read, full-color touch-panel, interactive on-board help menus, plus user-friendly documentation and tutorial tools for beginners and advanced users alike. Employees can have full access to system functions from a laptop or desktop PC using the Remote Operator's Software Kit, an option that emulates the device control panel on a computer monitor. Users with visual or motor impairments can operate the device using spoken commands or receive audible confirmation of selected functions with the optional Voice Operation Kit.



Voice Operation Kit

CANON'S VISION BRINGS OFFICE TECHNOLOGY TO A PERSONAL LEVEL

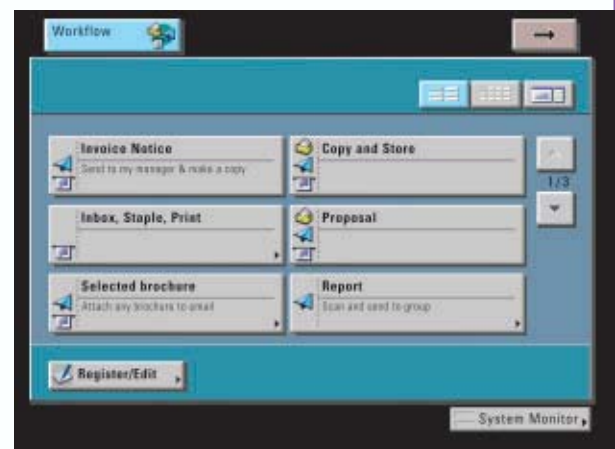
CUSTOMIZE YOUR DEVICE TO MEET SPECIFIC BUSINESS REQUIREMENTS

Canon stands ready to assist your company with the implementation of customized applications for your business needs. With Canon's Java-based MEAP® (Multifunctional Embedded Application Platform) architecture built into every system, you can incorporate unique software applications that run embedded in the device and map to your specific workflows. The result is the total integration of your imageRUNNER 3030/3025 systems into the business infrastructure by presenting customized applications to walk-up users directly from the devices' full-color LCD panel. Speak with your Authorized Sales Specialist for more information on Canon's innovative MEAP technology.



MEAP Application:
eCopy ShareScan OP

WORKFLOW COMPOSER STREAMLINES COMPLEX TASKS ACCORDING TO YOUR SPECIFIC NEEDS

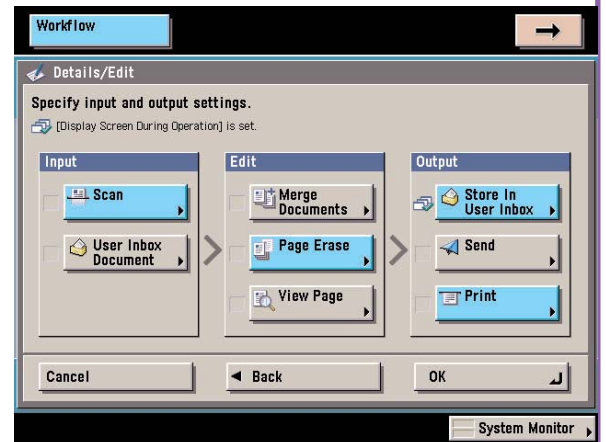


Workflow Composer Menu

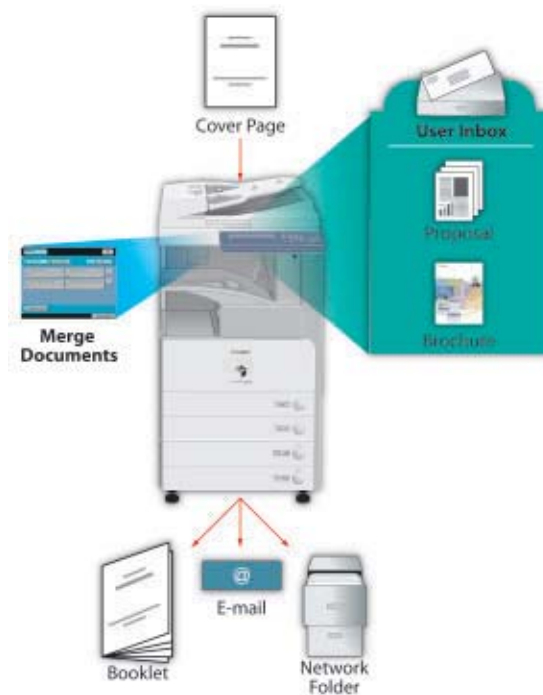
Canon's new Workflow Composer option compresses entire workflows into push-button simplicity for a new level of device personalization. With this capability users can register one key that encompasses all the scanning, editing, document merging, printing, and sending settings necessary to perform an entire task or workflow. For even greater convenience, the system can be configured to display/enable only the Workflow Composer buttons registered to each individual.

MAKE COMPLEX WORKFLOWS EASIER THAN EVER

Customized proposals are a sure way to increase customer response and sales but it can be a labor-intensive, time-consuming task. With an imageRUNNER device and Workflow Composer, proposal customization and records retention are accomplished in one easy step. In this example, a customized cover page is scanned to an imageRUNNER 3030/3025 devices' Mail Box where it's merged with a previously stored proposal page and appropriate product brochure. The new file is then printed in booklet mode for professional presentation in hard-copy form even as it travels via e-mail directly to the customer as well as your own network folder for record retention.



Workflow Composer Setup Menu



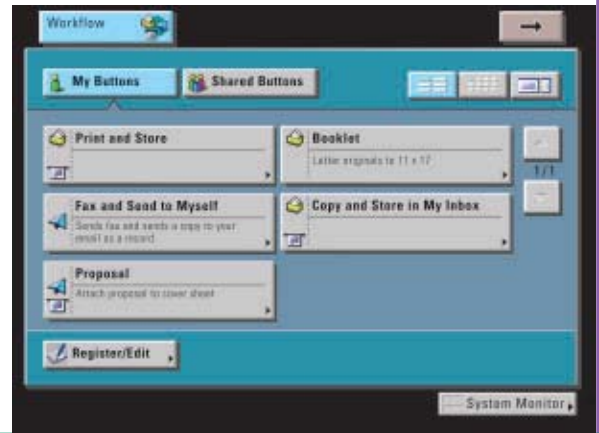
Combine, Produce, and Distribute with Ease

CUSTOMIZE DEVICE OPERABILITY FOR EVERY USER

Busy departments may have multiple employees who perform specific tasks for their job responsibilities. To tailor the Canon imageRUNNER 3030/3025 systems for each individual user, integrate the Workflow Composer feature with the Canon imageRUNNER 3030/3025 devices user authentication capabilities, so users have easier access to their unique buttons.



Specific Functions for Each User

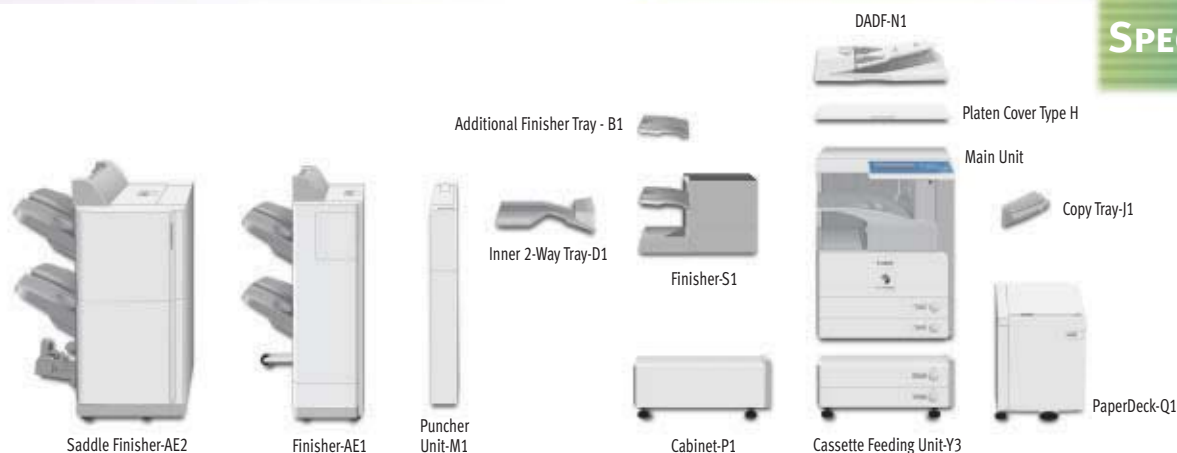


Workflow Composer "My Button" Menu

IMAGE OF A LEADER

Once again, Canon leads the way. The Canon imageRUNNER 3030 and imageRUNNER 3025 systems are the only multifunction solutions available today that allow for this kind of personalization to suit your individual business needs. Talk to your Authorized imageRUNNER Sales Specialist to learn more about how Canon technology can make your imageRUNNER device more personal.

SPECIFICATIONS



MAIN UNIT

Type:	Monochrome Digital Multifunction Imaging System
Imaging System:	Laser Dry Electrostatic Transfer
Developing System:	Dry Monocomponent Toner Projection
Fixing System:	RAPID Fusing System
Acceptable Originals:	Sheets, Books, and 3-Dimensional Objects up to 4.4 lb.
Max. Original Size:	11" x 17"
Max. Copy Size:	11" x 17"
Min. Copy Size:	3-7/8" x 5-7/8" (Stack Bypass)
Memory	
Standard:	512MB RAM + 20GB HDD (Shared)
Optional:	256MB RAM (768MB RAM Maximum)
Max. Copy Reservation:	10 Jobs
Max. Mail Boxes Supported:	100
Actual Resolution:	600 x 600 dpi
Interpolated Resolution:	1200 x 600 dpi (Copy) 2400 x 600 dpi (Print)
Halftone:	256 Gradations of Gray
Exposure Control:	Automatic or Manual (9 Levels)
Copy/Print Speed (Letter)	
imageRUNNER 3030:	Up to 30 ppm
imageRUNNER 3025:	Up to 25 ppm
First-Copy Time:	
imageRUNNER 3030:	4.2 Seconds (From Platen Glass) 6.2 Seconds (From DADF)
imageRUNNER 3025:	4.9 Seconds (From Platen Glass) 6.9 Seconds (From DADF)
Warm-Up Time:	10 Seconds or Less From Sleep Mode 30 Seconds or Less From Main Power Off
Multiple Copies:	1 – 9,999
Document Feeding Method:	50-Sheet Duplexing Automatic Document Feeder (Optional)
Paper Supply	
Standard:	Dual 550-Sheet Paper Cassettes + 50-Sheet Stack Bypass
Optional:	Dual 550-Sheet Paper Cassettes + 2,700-Sheet Paper Deck
Maximum:	4,950 Sheets
Acceptable Paper Sizes	
Upper Cassette:	Legal, Letter, Letter-R, Statement-R, Executive
Lower Cassette:	11" x 17", Legal, Letter, Letter-R, Statement-R, Executive
Stack Bypass:	11" x 17", Legal, Letter, Letter-R, Statement-R, Executive, Free Size (3-7/8" x 5-7/8" to 11-5/8" x 17"), and Envelopes
Acceptable Paper Weight	
Cassettes:	17 lb. to 20 lb. Bond
Stack Bypass:	17 lb. to 32 lb. Bond
Duplexing:	Standard Automatic Trayless Duplexing

Magnification	
Standard Mode:	100%
Preset Reduction:	25%, 50%, 64%, 73%, 78%
Preset Enlargement:	121%, 129%, 200%, 400%
Zoom Mode	
Platen:	25% - 400% (in 1% Increments)
DADF:	25% - 200% (in 1% Increments)
Network Interface	
Connections:	10/100Base-TX (RJ-45), USB 2.0 High Speed
Dimensions (H x W x D):	30" x 22-1/4" x 27-5/8" (761.4mm x 565mm x 700mm)
Weight (Excluding ADF):	163 lb. (116kg)
Power Requirements:	120V AC, 60Hz, 10A
Power Consumption:	1.35kW (Max.)
Plug:	NEMA 5-15P
Toner (Estimated Yield):	21,000 Impressions at 6% Image Coverage

OPTIONAL ACCESSORIES

Duplexing Automatic Document Feeder	
Acceptable Originals:	Statement to 11" x 17"
Acceptable Weights	
One-Sided Scanning:	11 lb. to 32 lb. Bond
Two-Sided Scanning:	13 lb. to 32 lb. Bond
Paper Capacity:	50 Sheets (20 lb. Bond)
Cassette Feeding Unit-Y3	
Acceptable Paper Sizes:	11" x 17", Legal, Letter, Letter-R, Statement-R, Executive
Paper Capacity:	Dual 550-Sheet Cassettes (1,100 Sheets at 20 lb. Bond)
Acceptable Paper Weight:	17 lb. to 20 lb. Bond
Weight:	Approx. 50.7 lb. (23kg)
Paper Deck-Q1	
Acceptable Paper Size:	Letter
Paper Capacity:	2,700 Sheets (20 lb. Bond)
Acceptable Paper Weight:	17 lb. to 20 lb. Bond
Dimensions (H x W x D):	18-5/8" x 14-5/8" x 23-1/4" (473mm x 372mm x 591mm)
Weight:	Approx. 65.3 lb. (29.6kg)
Inner 2-Way Tray-D1	
Number of Trays:	Two
Acceptable Paper Sizes:	11" x 17", Legal, Letter, Letter-R, Statement-R, Executive, Envelope Freesize (3-7/8" x 5-7/8" to 11-3/4" x 17")
Acceptable Paper Weight:	17 lb. to 32 lb. Bond
Paper Capacity Per Tray	
Upper Tray:	100 Sheets (LTR), 50 Sheets (Other Sizes)
Lower Tray:	250 Sheets (LTR), 100 Sheets (Other Sizes)
Attachable Accessories:	Copy Tray-J1

Finisher-S1	
Number of Trays:	One (Second Tray Optional)
Acceptable Paper Sizes:	11" x 17", Legal, Letter, Letter-R, Statement-R, Executive, Envelope Freesize (3-7/8" x 5-7/8" to 11-3/4" x 17")
Acceptable Paper Weight:	17 lb. to 32 lb. Bond
Tray Capacity	
Non-collate, Collate, Group Mode:	1,000 Sheets (Letter, Statement-R) 500 Sheets (11" x 17", Legal, Letter-R)
Staple Mode:	1,000 Sheets/30 Sets (Letter) 500 Sheets/30 Sets (11" x 17", Legal, Letter-R)
Tray Capacity (with Additional Finisher Tray-B1)	
Non-collate, Collate, Group Mode:	300 Sheets Per Tray (Letter, Statement-R) 150 Sheets Per Tray (11" x 17", Legal, Letter-R)
Staple Mode:	300 Sheets/30 Sets Per Tray (Letter) 150 Sheets/30 Sets Per Tray (11" x 17", Legal, Letter-R)
Staple Position	
Top Left Corner:	11" x 17" (Landscape), Legal (Landscape), Letter, Letter-R
Top Right Corner:	11" x 17" (Portrait), Legal (Portrait)
Max. Stapling Capacity:	50 Sheets (Letter) 30 Sheets (11" x 17", Legal, Letter-R)
Attachable Accessories:	Additional Finisher Tray-B1 Puncher Unit-R1 Copy Tray-J1
Puncher Unit-R1 (Option for Finisher-S1)	
Acceptable Paper Sizes:	11" x 17", Legal, Letter, Letter-R
Acceptable Paper Weight:	17 lb. to 32 lb. Bond
Punch Type:	
Two Holes:	Legal, Letter-R
Three Holes:	11" x 17", Letter
Punch Waste Capacity:	
Two Holes:	Approx. 2,500 Sheets
Three Holes:	Approx. 1,500 Sheets
Finisher-AE1/Saddle Finisher-AE2	
Number of Trays:	2 Trays
Acceptable Paper Sizes:	11" x 17", Legal, Letter, Letter-R, Statement, Statement-R, Executive, Envelope, Freesize (3-7/8" x 5-7/8" to 11-3/4" x 17")
Acceptable Paper Weight:	17 lb. to 32 lb. Bond
Tray Capacity	
Non-collate, Collate, Group Mode:	1,000 Sheets (Letter, Statement-R, Executive) 500 Sheets (11" x 17", Legal, Letter-R)

Specifications are continued on back cover.

Staple Mode:	1,000 Sheets/30 Sets (Letter, Executive) 500 Sheets/30 Sets (11" x 17", Legal, Letter-R)
Staple Positions:	Corner Staple, Double-Staple
Max. Stapling Capacity:	50 Sheets (Letter, Executive) 30 Sheets (11" x 17", Legal, Letter-R)
Saddle-Stitching*	
Acceptable Paper Sizes:	11" x 17", Legal, Letter-R
Saddle-Stitch Capacity:	15 Sheets (60 Page Booklets)
Tray Capacity:	25 Sets (1 to 5 Sheets) 15 Sets (6 to 10 Sheets) 10 Sets (11 to 15 Sheets)
Folding:	V-Folding
Dimensions (H x W x D)	
Finisher-AE1:	40-7/8" x 25-3/8" x 25-7/8" (1037mm x 643mm x 657mm)
Saddle Finisher-AE2:	40-7/8" x 29-3/8" x 25-7/8" (1037mm x 747mm x 657mm)
Attachable Accessories:	Puncher Unit-M1
Puncher Unit-M1 (Option for Finisher-AE1/Saddle Finisher-AE2)	
Acceptable Paper Sizes:	11" x 17", Legal, Letter, Letter-R
Acceptable Paper Weight:	17 lb. to 32 lb. Bond
Punch Type	
2 Holes:	Legal, Letter-R
3 Holes:	11" x 17", Letter
Punch Waste Capacity:	Approx. 3,000 Sheets
UFR II/PCL Printer Kit-S1	
CPU:	Canon Custom Processor
Memory:	512MB (Standard) 768MB (Maximum) (Shared)
Hard Disk Drive:	20GB (Shared)
Interface Connections:	10/100Base-TX (RJ-45), USB 2.0 High Speed
Supported PDL:	UFR II, PCL 5e, PCL 6
Maximum Print Resolution:	2,400 x 600 dpi (Interpolated)

Printer Drivers	
UFR II:	Windows® 2000/XP; Windows Server 2000, Citrix MetaFrame, Macintosh® OS X (OS 10.1.5 or Later)
PCL 5e/6:	Windows 98/Me/2000/XP Windows NT 4.0/Server 2003 Citrix MetaFrame
Internal Fonts:	80 Scalable Fonts, 30 Barcode, 10 Bitmap, 2 OCR fonts
Interface Connections:	10/100Base-TX (RJ-45), USB 2.0 High Speed
Network Operating Systems:	Novell® NetWare® v.3.2, 4.1, 4.11, 4.2, 5, 5.1, 6.5 (IPX/SPX) Windows 98, Me, 2000, XP, Server 2003 (TCP/IP) Apple® Macintosh OS 8.0 or higher (DDP) Solaris™ 1.5x, 2.5x or later (TCP/IP)
Accessory:	PS Printer Kit-S1
PS Printer Kit-S1 (Option for UFR II/PCL Printer Kit-S1)	
Memory:	512MB (Standard) 768MB (Maximum) (Shared)
Hard Disk Drive:	20GB (Standard) (Shared)
Interface Connections:	10/100Base-TX (RJ-45), USB 2.0 High Speed
Supported PDL:	PostScript 3 Emulation
Maximum Print Resolution:	2400 x 600 dpi (Interpolated)
Printer Drivers:	Windows 98/Me/2000/XP Windows NT 4.0/Server 2003 Citrix MetaFrame Macintosh OS X (OS 10.2 or Later)
Internal Fonts:	136 Scalable Fonts
Network Operating Systems:	Windows 98, Me, 2000, XP, Server 2003 Apple Macintosh OS X (10.2.8 or Later)

Universal Send Kit-G1	
Address Book Capacity:	Max. 1,800 Destinations Max. 5 LDAP Servers
Sending Methods:	E-mail, I-Fax, File Server (FTP, SMB, IPX, WebDAV), User Inbox, Super G3 (Optional)
Communication Protocol File:	FTP (TCP/IP), SMB (TCP/IP), NCP (IPX), WebDAV
E-Mail/I-Fax:	SMTP, POP3, I-Fax (Simple, Full)
Data Format	
File/E-mail:	TIFF, PDF, PDF (OCR), ** Encrypted PDF,*** Digital Device Signature PDF,*** Digital User Signature PDF, TIFF (MH, MR, MMR)
I-Fax:	
Super G3 Fax Board-Q1/Super G3 Multi-Line Fax Board-D1	
Applicable Line:	Public Switched Telephone Network (PSTN)
Connection Lines:	One-Line (Super G3 Fax Board-Q1) Two-Lines (Super G3 Multi-Line Fax Board-D1)
Sending/Original Size:	Statement to 11" x 17"
Receiving/Printing Size:	Statement to 11" x 17"

OTHER OPTIONAL ACCESSORIES

- Platen Cover Type-H
- Cabinet-P1
- FL Cassette-Y1 (Replacement)
- FL Cassette-Z1 (Replacement)
- Envelope Feeder Attachment-C2
- Copy Tray-J1
- Document Tray-J1
- Card Reader-C1
- Card Reader Kit-B1
- Braille Label Kit-A1
- ADF Access Handle-A1
- Workflow Composer-A1
- Encrypted Secure Print Software-C1**
- Barcode Printing Kit-A1**
- Web Access Software-F1†
- Digital User Signature PDF Kit-A1***
- Universal Send PDF Security Feature Set-A1***
- Universal Send Searchable PDF Kit-A1***
- imageRUNNER 256MB Expansion RAM-B1
- Secure Watemark-A1
- HDD Data Encryption Kit-B4
- HDD Data Erase Kit-A1
- Expansion Bus-B1
- USB Application Interface Board-G1
- Remote Operator's Software Kit-A2
- Voice Operation Kit-A1**
- eCopy Suite
- imageWARE Suite

* Available with Saddle Finisher-AE2 Only.

** Requires Universal Send Searchable PDF Kit-A1.

*** Requires Universal Send PDF Security Feature Set-A1.

▲ Requires Digital User Signature PDF Kit-A1.

▲▲ Requires the UFR II/PCL Printer Kit-S1.

† Requires the imageRUNNER 256MB Expansion RAM to display Web Flash content.

Requires the UFR II/PCL Printer Kit-S1 for printing functions.

Add the PS Printer Kit-S1 if printing PDF files.

** Requires imageRUNNER 256MB Expansion RAM-B1.

*** Requires Universal Send Kit-G1

Canon
*image*ANYWARE

1-800-OK-CANON
www.usa.canon.com

Canon U.S.A., Inc.
One Canon Plaza
Lake Success, NY 11042



As an ENERGY STAR® Partner, Canon U.S.A., Inc. has determined that this product meets the ENERGY STAR guidelines for energy efficiency. ENERGY STAR and the ENERGY STAR mark are registered U.S. marks. Windows is a registered trademark of Microsoft Corporation in the United States and/or other countries. PostScript is a registered trademark or trademark of Adobe Systems Incorporated in the United States and/or other countries. Apple and Macintosh are trademarks of Apple Computer, Inc. Novell and Netware are registered trademarks of Novell, Inc. in the United States and other countries. Solaris is a trademark or registered trademark of Sun Microsystems, Inc. in the United States and other countries. CANON and IMAGERUNNER are registered trademarks of Canon Inc. in the United States and may also be registered trademarks or trademarks in other countries. RAPID FUSING SYSTEM is a trademark of Canon Inc. in the United States and may also be a registered trademark or trademark in other countries. IMAGEWARE is a registered trademark of Canon U.S.A., Inc. in the United States and is a trademark of Canon Inc. in certain other countries. IMAGEANYWARE is a trademark of Canon. All referenced product names and other marks are trademarks of their respective owners. Specifications and availability are subject to change without notice. Some products shown with optional accessories and equipment. Actual product configurations may differ. ©2006 Canon U.S.A., Inc. All rights reserved.

0068W629
1206-3030/25-65M-LTM

PRINTED ON RECYCLED PAPER IN THE U.S.A.