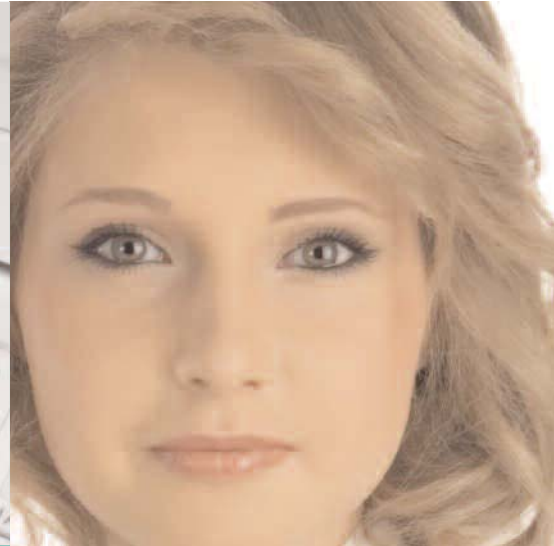


Ricoh Aficio MP 171/
MP 171F/MP 171SPF
Digital Imaging System
Big Performance, Small Footprint

RICOH

compact



versatile



efficient



Ricoh Aficio MP 171/MP 171F/MP 171SPF

Handle anything with a system that does everything.

To keep pace with the competition, you need to perform a wide range of document tasks quickly and easily. That is why the RICOH® Aficio® MP 171/MP 171F/MP 171SPF is the right choice for fast-paced small offices and departmental workgroups.

It delivers all of the capabilities you need — and the value you demand — in a single, compact system.



Convenience Performance Versatility Value

Increase Your Productivity

Trust the Ricoh Aficio MP 171/MP 171F/MP 171SPF Digital Imaging System to help you accomplish more work in less time, for a lower total cost of ownership.

- Complete document tasks quickly with 17 page-per-minute output speed.
- Copy, scan and fax large documents such as booklets, brochures and oversized pages on the legal-size platen.
- Reduce interruptions caused by the need for frequent paper replenishment. The Ricoh Aficio MP 171/MP 171F/MP 171SPF holds up to 1,350 sheets so you can run longer jobs without pausing.
- Create a wider variety of documents with two optional paper trays. Keep 8.5" x 11" paper in the standard tray, and legal-size paper and specialty stocks in the optional trays.
- Print a PDF or JPEG attachment automatically by sending an e-mail directly to the system with the Mail-to-Print feature, which saves time and improves flexibility.

Expand Your Connectivity

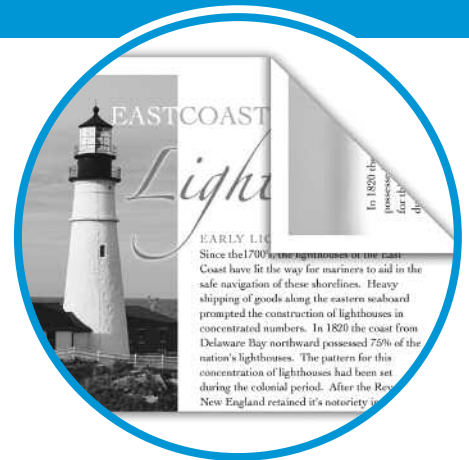
To ensure fast integration, the Ricoh Aficio MP 171/MP 171SPF Digital Imaging System includes everything you need to connect in a wide range of stand-alone and networked environments.

- Utilize a wider range of print streams with PCL5e/6, support for XPS and optional genuine Adobe® PostScript® 3™.
- Accommodate offices with a variety of networking needs. The system integrates seamlessly in Windows, Macintosh or UNIX environments with standard 10Base-T/100Base-TX Ethernet and USB 2.0 interfaces, as well as optional Gigabit Ethernet, IEEE 802.11a/b/g and IEEE 1284 interfaces.
- Minimize wait time and relieve network congestion with PDF Direct Print, which enables you to print PDFs without opening each file in Adobe® Acrobat®.

Energize Your Scanning

Full-color scanning enables you to scan and deliver brochures, business cards, photos and other important documents — and retain the full impact of color.

- Meet tight deadlines and eliminate overnight delivery charges when you distribute full-color documents via Scan-to-Email or to network folders via Scan-to-Folder.
- Make any hard copy document portable in seconds with the Scan-to-Media option, which loads scanned files directly to a USB drive or SD card.
- Save time and prevent misdials by retrieving fax numbers and e-mail addresses directly from your corporate address book, with LDAP support.
- Protect sensitive or confidential scanned documents with security features, including encrypted PDF transmission.



Cut paper usage in half with standard automatic two-sided (duplex) output.



Forward incoming faxes to an e-mail address or folder, so users can receive important documents no matter where they are.



Take your documents on the go with the easy and convenient Scan-to-Media option.

CopyPrintScanFax

Transform Your Faxing

Today, faxing involves more advanced technology than conventional phone lines. The Ricoh Aficio MP 171F/MP 171SPF provides all the tools you need to streamline fax communications.

- Send fax documents quickly and easily — and minimize phone costs — with a Super G3 fax modem that transmits each page in just two seconds.
- Forward incoming faxes to an e-mail address, so users can receive important documents anywhere — even if they are away from the office.
- Reduce document distribution costs dramatically with advanced IP (T.38) faxing, which delivers fax documents almost instantaneously over IP networks, or with Internet (T.37) faxing.
- Deliver fax documents to any destination without leaving your desk with LAN faxing, which saves time and money.

Increase Document Security

The Ricoh Aficio MP 171/MP 171SPF Digital Imaging System makes it easy to increase security and ensure easy network administration.

- Ensure security with multi-level Authentication which lets you confirm user identity and control access to scanning and other functions.
- Prevent confidential documents from unauthorized viewing with Locked Print. It requires a password before it releases any file for output and deletes the file automatically from the MFP's optional hard drive.
- Reduce the risk of wiretapping with encrypted PDF transmission. This feature encrypts PDF data prior to transmission via Scan-to-Email and Scan-to-Folder.
- Protect critical documents with the optional DataOverwriteSecurity System (DOSS) feature, which overwrites the hard drive after every job. Or use the HDD Encryption option to safeguard valuable data, even if the hard drive is stolen.

Simplify System Management

Manage the Ricoh Aficio MP 171/MP 171F/MP 171SPF remotely and control document workflow right from your desktop with user-friendly utilities.

- Allocate print jobs to specific clients, workgroups or projects for chargeback using the Classification Code feature.
- View and adjust system settings, see print job status, check supply levels and perform other administrative tasks remotely with Web Image Monitor.
- Manage multiple networked Ricoh systems with Web SmartDeviceMonitor.
- Eliminate manual meter data submission with the Ricoh @Remote Intelligent Management System.
- Take advantage of the Software Development Kit (SDK) — a first for this class of the Ricoh Aficio MP 171/MP 171F/MP 171SPF Digital Imaging System — to create or integrate customized applications that automate workflow.



The Total Green Office Solution



Ricoh continues its long-standing commitment to developing office solutions with environmentally friendly and superior energy- and supply-saving features, without compromising productivity.

Compact Affordable Flexible Reliable

Everything you need to streamline workflow.

Standard 50-Sheet Automatic Reversing Document Feeder

Conveniently handle one- and two-sided originals up to 8.5" x 14" in size.

Scan-to-Media (Optional)

Take scanned documents with you in seconds on a USB drive or SD card.

Legal-Size Platen

Accommodate documents up to 8.5" x 14" with ease.

Accessibility Handle (Optional/Not Shown)

Make it easy for any user to open and close the standard paper tray.

Storage Cabinet (Optional)

Keep supplies ready for quick replacement in one of two optional storage cabinets.



Control Panel

Gain access to all system capabilities in seconds.

Standard 100-Sheet Bypass Tray

Take advantage of a wide range of paper sizes and types.

Standard 250-Sheet Paper Tray

Start with an ample supply of paper.

500-Sheet Paper Tray (Optional)

Accommodate sizes up to 8.5" x 14" and increase paper capacity to 850 sheets — or add two 500-Sheet Paper Trays to reach the maximum capacity of 1,350 sheets.

Functionality Overview



Ricoh Aficio MP 171

- Copying
- Printing (optional)
- Scanning (optional)



Ricoh Aficio MP 171F

- Copying
- Super G3 Faxing



Ricoh Aficio MP 171SPF*

- Copying
- Printing
- Scanning
- Super G3 Faxing
- Internet Faxing
- LAN Faxing
- IP Faxing

*Shown with Scan-to-Media option.

Ricoh Aficio MP 171/MP 171F/MP 171SPF

Specifications

Aficio®

General Specifications

| | |
|--|--|
| Configuration | Console |
| Scanning Element | Flatbed with CCD array image-sensor |
| Printing Process | Laser beam scanning/marketing & electro-photographic printing |
| Toner | Dry, dual component |
| System Memory (Std./Max.) | MP 171: 16 MB/640 MB + 80 GB HDD MP 171F: 256 MB/256 MB MP 171SPF: 640 MB/640 MB + 80 GB HDD |
| Output Speed (Copy/Print) | 17 cpm (simplex), 10 cpm (duplex) |
| Warm-Up Time | MP 171: Less than 10 seconds MP 171F/MP 171SPF: Less than 30 seconds |
| First Copy Time | 7.5 seconds or less |
| Recovery Time (from Auto Off) | Less than 10 seconds |
| Copy Resolution | 600 x 600 dpi |
| Grayscale | 256 levels |
| Exposure Adjustment | Manual and automatic |
| Multiple Copies | Up to 99 |
| Document Feeder (Standard) | Automatic Reversing Document Feeder (ARDF) |
| Original Capacity | 50 sheets |
| Paper Sizes | Standard Tray: 5.5" x 8.5" to 8.5" x 11" Optional Tray: 8.5" x 11" to 8.5" x 14" Bypass Tray: 5.5" x 8.5" to 8.5" x 14" Duplex Unit: 8.5" x 11" to 8.5" x 14" |
| Paper Weights | Standard/Optional Trays: 16 – 24 lb. Bond Bypass Tray: 16 – 42 lb. Bond Duplex Unit: 20 – 24 lb. Bond |
| Exposure Glass Input Capacity | Up to 8.5" x 14" Standard: 250 sheets + 100-Sheet Bypass Tray Optional: 500 sheets x 1 or 2 Trays |
| Output Capacity | 250-Sheet Internal Tray |
| Paper Types | Plain paper, laser printer qualified transparencies, labels, envelopes |
| Auto Duplex | Standard |
| Zoom | 50% to 200% in 1% increments |
| Preset Reduction and Enlargement Ratios | 65%, 78%, 93%, 129%, 155% |
| Dimensions (WxDxH) | 19.09" x 17.72" x 18.94" |
| Weight | MP 171: 59.53 lbs. MP 171F/MP 171SPF: 63.93 lbs. |
| Power Requirements | 120V, 60Hz, 8A |
| Standard Features | Combine Copy, Duplex Copying, Electronic Sort, Photo Mode, Series Copy |

Printer Specifications

| | |
|-----------------------------------|--|
| Max. Print Speed | 17 ppm |
| CPU | RM5231 400 MHz |
| Memory Capacity | Standard: 640 MB (128 MB Resident + 512 MB DIMM) Optional: 80 GB HDD |
| Page Description Languages | Standard: PCL5e/6 Optional: Genuine Adobe® PostScript®3™ |
| Maximum Print Resolution | 600 x 600 dpi |
| Standard Interfaces | 10Base-T/100Base-TX Ethernet (RJ-45), USB 2.0 |
| Optional Interfaces | IEEE 802.11a/b/g, IEEE 1284, Gigabit Ethernet |
| Network Protocols | TCP/IP (IPv4, IPv6), IPX/SPX, Apple Talk |
| Fonts for PCL 5e/6 | 45 Roman Fonts |
| Fonts for PS3 | 136 Roman Fonts |
| Network Operating Systems | Windows 2000/XP/Vista/Server 2003/Server 2008; Novell Netware 3.12, 3.2, 4.1, 4.11, 5.0, 5.1, 6.0, 6.5; UNIX Filters for Sun Solaris 2.6/7/8/9/10; HP-UX 10.x/11.x/11iv2/11iv3; Red Hat Linux 6.x, 7.x, 8.x, 9.x, Enterprise; SCO OpenServer 5.0.6/5.0.7/6.0; IBM AIX V4.3 & 5L Version 5.1/5.2/5.3; Mac OS 8.6 – 9.x; OS X 10.1 or later |
| Utilities | SmartDeviceMonitor for Admin and Client, Web SmartDeviceMonitor, Web Image Monitor |

Other Printer Features

Bonjour Support, Classification Code, Mail to Print, PDF Direct Print, Sample/Hold/Stored/Locked Print, Store and Print, WSD Printer

Scanner Specifications

| | |
|--------------------------------|---|
| Scanning Speed | Embedded Scan-to-Email: 22 ipm @ 200 dpi BW; 10 ipm @ 200 dpi Full-Color |
| Scanning Resolution | 100 to 600 dpi |
| Grayscale | 256 levels |
| Scan Area | Main: 8.5" (216 mm) Sub: 14.02" (356 mm) |
| Compression Method | BW: TIFF (MH, MR, MMR) Grayscale: JPEG Full-Color: JPEG |
| Scan Mode | BW: Text, Text/Line Art, Text/Photo, Photo, Grayscale Full-Color: Text/Photo, Glossy Photo |
| Standard Interfaces | 10Base-T/100Base-TX |
| Optional Interfaces | IEEE 802.11a/b/g |
| File Formats | Single Page PDF, TIFF, JPEG, Multi Page PDF, TIFF |
| Scan-to Modes Supported | Scan-to-Email (with LDAP support); Scan-to Folder (SMB/FTP/NCP); Network TWAIN Scanning; Scan-to-Media (USB/SD optional); WSD Scanner (for Vista) |
| Standard Features | Duplex Scanning, Embedded Scan-to-Email/Folder (MP 171SPF) |

Fax Specifications

| | |
|----------------------------|---|
| Type | ITU-T (CITT) G3 |
| Circuit | PSTN, PBX |
| Resolution | 200 x 100 dpi, 200 x 200 dpi |
| Modem Speed | 33.6K – 2,400 bps with Automatic Shift Down |
| Compression Method | MH, MR, MMR, JBIG |
| Scan Speed | 2.0 seconds |
| Transmission Speed | G3: Approx. 2 seconds/page (w/JBIG compression) G3: Approx. 3 seconds/page (w/MMR compression) |
| Memory | 4 MB (approx. 320 pages) |
| Memory Backup | 12 hours |
| Quick/Speed Dials | 16/150 |
| Group Dials | 10 groups (max. 100 numbers per group) |
| ID Code Programming | 4 digits |
| User Function Key | 3 keys |
| Standard Features | Detection of Misplaced Documents, Double Check Destination, Duplex Reception/Transmission, Fax Forward to Email/Folder, Internet Fax*, IP Fax*, LAN Fax*, LDAP Support, Serial Broadcasting *MP 171SPF only. |

PS480 Paper Bank (Optional)

| | |
|-----------------------|--------------------------------|
| Paper Size | 8.5" x 11" SEF, 8.5" x 14" SEF |
| Paper Weight | 16 – 24 lb. Bond |
| Paper Capacity | 500 sheets x 1 or 2 Trays |

Additional Options

Accessibility Handle Type C, Adobe® PostScript®3™ Unit Type 171, Counter Interface Unit A, Data Overwrite Security Unit, FAC19 Cabinet, FAC44 Cabinet, Gigabit Ethernet Board Type A, Handset Type 1018, Hard Disk Drive Option Type 171, HDD Encryption Unit Type A, HD-PLC Ethernet Adaptor, IEEE 1284 Interface Board Type A, IEEE 802.11a/b/g Interface Unit Type L, Java VM Card Type L, Printer Scanner Unit Type 171, USB 2.0/SD Slot Type B

Consumables*

| | |
|---------------------------------------|----|
| Black Toner Cartridge | 7K |
| *Toner yield is based on 6% coverage. | |

For maximum performance and yield, we recommend using genuine Ricoh parts and supplies.

RICOH

www.ricoh-usa.com

Bringing Ricoh Value to Your Organization

Ricoh technology offers a diverse portfolio of solutions to help your organization stay competitive and move ahead. Let Ricoh show you how to empower your business to improve critical processes, keep information secure, ensure compliance and promote environmental sustainability while reducing the total cost of ownership.

Ricoh Americas Corporation, Five Dedrick Place, West Caldwell, NJ 07006
Ricoh® and the Ricoh Logo are registered trademarks of Ricoh Company, Ltd. All other trademarks are the property of their respective owners. Print speed may be affected by network, application or PC performance. Specifications and external appearances are subject to change without notice. Products are shown with optional features.

R2969

