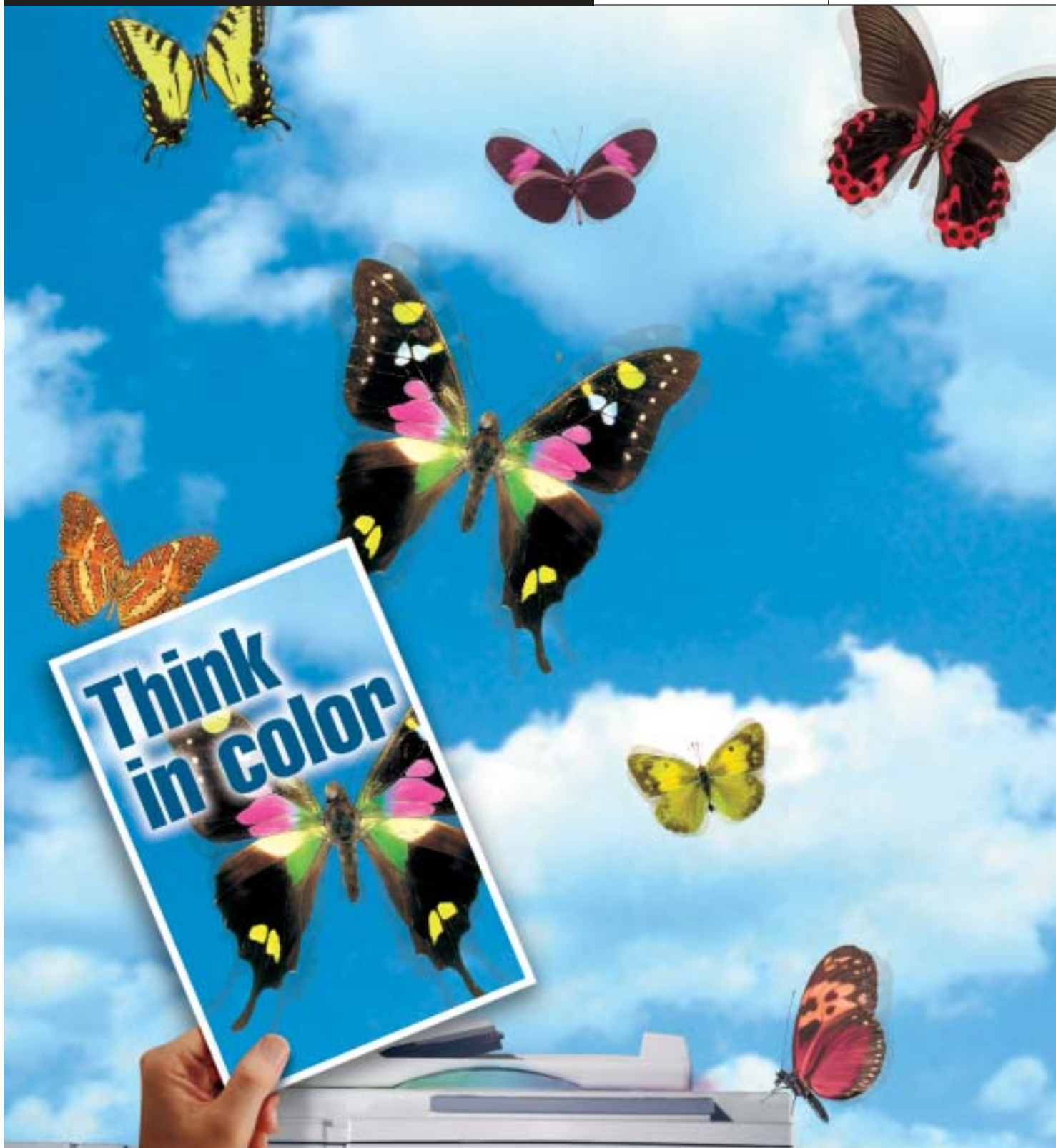


HIGH SPEED COLOR COPIERS

e-STUDIO210c

e-STUDIO310c



**TOSHIBA**  
Don't copy. Lead.

## FULLY-INTEGRATED

When you think in color, think Toshiba. The e-STUDIO210c/310c incorporates the breakthrough Toshiba color imaging technology that has revolutionized the color digital copier industry. This complete high-speed business color solution offers an impressive 21/31 Full Color Copies/Prints Per Minute, EFI Fiery® Controller Connectivity, Saddle-Stitch Finishing, and Standard Electronic Sort Capabilities.



This affordable color system is ideal for high volume Office Environments, Print-For-Pay Facilities, and Professional Graphics Departments that require a standalone or network-connectable copier, printer, and scanner.

High output speed, industry-leading image quality, and superior paper handling, combined with complete network printing and scanning capabilities, make the e-STUDIO210c/310c an outstanding, all-purpose office productivity tool.

## FULL-COLOR

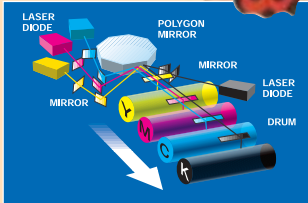


IMAGING SOLUTION



FAST

PERFORMANCE



The e-STUDIO210c/310c incorporates Toshiba's proprietary DCIT (Dual Compression Imaging Technology) which compresses scanned color images in two stages and significantly increases color data processing speed.

### DUAL COMPRESSION IMAGING TECHNOLOGY

The e-STUDIO210c/310c incorporates Toshiba's proprietary DCIT (Dual Compression Imaging Technology) which compresses scanned color images in two stages and significantly increases color data processing speed. This provides true Scan Once/Print Many capabilities and results in faster scanning and copying, less noise, and reduced energy consumption.

Toshiba's innovative DCIT gives the e-STUDIO210c/310c the added convenience of Standard Electronic Sorting of

multiple set copy jobs without a sorter. This eliminates the need for a mechanical sorter and overcomes the job output limitations of conventional sorters. DCIT's efficient memory management also allows for rotation of a color page in memory. Combined with Electronic Sorting, this allows the e-STUDIO210c/310c to utilize advanced finishing features on copy jobs such as Saddle-Stitch and 2-in-1 printing.

### AMAZING PRODUCTIVITY AND VERSATILITY

System productivity is enhanced by a user-friendly, intuitively-designed Touch Screen Control Panel with streamlined, high contrast LCD

copier controls. Auto Color Selection automatically detects whether your original documents are in color or black and white. The e-STUDIO210c/310c also offers convenient One Touch Color Adjustment and Mono Color Copying that can transform original documents into one of ten colors.

An efficient new Toshiba Toner requires less fusing oil to deliver clean, unblemished images. A Transport Belt Drop function saves toner and reduces drum wear when printing black and white documents.



FEATURES



e-STUDIO210c



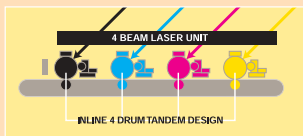
e-STUDIO310c

- Access Codes (120)
- Anti-Counterfeit System
- Auto Cassette Change
- Auto Clear (Default 45 Seconds)
- Auto Color Selection (ACS)
- Auto Job Start
- Automatic Calibration
- Automatic Exposure Selection (AES)
- Automatic Magnification Selection (AMS)

## TECHNOLOGY

### INNOVATIVE COLOR INLINE PRINTING TECHNOLOGY

No other manufacturer offers the breakthrough technology incorporated into Toshiba's Color Inline Printing System. This innovative printing process integrates Scan Once/Print Many



The e-STUDIO210c/e-STUDIO310c are both designed with a straight paper path that results in less paper jams and increased image stability.

Technology and a Four Beam Laser Unit that simultaneously fires 4 separate laser beams onto all 4 drums through a single laser unit with one polygon mirror.

Toshiba's Single Pass Four Drum Tandem Design System is the key to the e-STUDIO310c's high-speed output of 31 Full-Color Copies and Prints Per Minute and the e-STUDIO210c's 21 Full-Color Copies and



Prints Per Minute. The reliable e-STUDIO210c/310c is designed with a straight paper path that results in less paper jams and increased image stability. It also boasts an impressive FCOT of 9.5 seconds, among the fastest in the industry.

### INDUSTRY-LEADING TOSHIBA IMAGING TECHNOLOGY

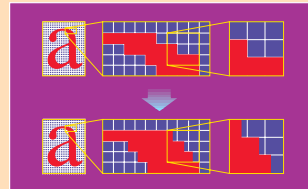
Toshiba's patented imaging technology processes documents with a 600 dpi, 10-bit Color Scanner at 1,024 Gradations Per Pixel and transforms scanned images into flawless, high resolution 9,600 x 600 dpi equivalent reproductions. Toshiba's proprietary Image Quality Control provides consistently high-resolution copies and the highest possible



Toshiba's proprietary Image Quality Control provides consistently high-resolution copies and the highest possible image reproduction.

image reproduction. This results in minimal color fading and copy discoloration with fewer color calibration calls.

Toshiba's Screen Enhancement Technology increases the image density of the original document by accurately reproducing lighter



Scalable Smoothing Technology delivers superb image quality and assures razor sharp text.

colors. Automatic Registration Control ensures consistent, high-quality color images with automatic laser timing adjustments. The Advanced Image Enhancement Mode distinguishes between text, graphics, and line art and recreates documents with magnificent clarity and vibrant colors. Scalable Smoothing Technology delivers superb image quality and assures razor sharp text.

**Don't copy. Lead.**

**It's not a tagline. It's our corporate mantra — what we do, and what our product innovations enable our customers and business partners to do. Here at Toshiba, we never stop inquiring, inventing, and inspiring others to do the same.**

**Being a leader in technology has its advantages. Every invention and product improvement starts from a place of experience and knowledge. We don't depend on last year's technology, nor do we rest on our laurels. We are constantly inventing new multifunction tools that transform the way people work. Fax, copy, scan, print — from across the hall or across the ocean.**

**What will we think of next? We ask ourselves that all the time.**

- Automatic Paper Selection (APS)
- Automatic Shut-Off
- Background Adjustment
- Basic and Professional Color Adjustment Modes
- Book Center Erase
- Color Copying
- Dual Page Copying
- Duplexing (Manual)
- Edge Erase

- Editing (Mask/Trim — 1 Area)
- Electronic Sorting
- Energy Saver
- Error Code History (8)
- Full Bleed Copying (11" x 17")
- Help Key
- Image Centering
- Image Repeat
- Image Shift
- Interrupt

- Job Memory
- Job Recovery
- Language (6 Languages — US English/French/Spanish/German/Italian/Japanese)
- LCD Touch Screen Control Panel
- Magazine Sort
- Map Mode
- Margin Shift
- Mirror Image

**TOSHIBA**

## IMAGE



## CLARITY

### FLEXIBLE DOCUMENT AND MEDIA CAPABILITIES

The e-STUDIO210c/310c conforms to the Toshiba Modular Design Concept allowing you to tailor system options to meet your individual color copying and printing needs. An ample 1,500-Sheet Large Capacity Feeder can handle extremely long paper runs and a 130-Sheet Stack Feed

'Smart' Bypass accommodates a variety of paper sizes and thicknesses.

Other features include 11" x 17" Full Bleed Copying and Printing, two 600-Sheet Cassettes for expanded paper capacity, and a 4,030-Sheet Paper Input Capacity that adapts to a variety of media types and paper weights up to 140 Lbs. Index. An OHP



*An ample 1,500-Sheet Large Capacity Feeder gives you the ability to handle extremely long paper runs.*

Film Feeding feature easily accommodates film transparencies from a standard cassette, as well as the bypass tray.

An optional Automatic Duplexing Unit lets you create two-sided copies and an optional Reversing Automatic Document Feeder (RADF) automatically inverts two-sided originals for copying in duplex formats.



*A 130-Sheet Stack Feed "Smart" Bypass can accommodate a variety of paper sizes and thicknesses.*

### NETWORK-CONNECTED COLOR PRINTING AND SCANNING

Toshiba's dual controller strategy offers the choice of an embedded Fiery® X3e+ "connectivity solution" or a robust EFI Fiery® Z5 external controller.



*An Optional Automatic Duplexing Unit helps economize paper by allowing you to create two-sided copies and an optional Reversing Automatic Document Feeder (RADF) automatically inverts two-sided originals for copying in duplex formats.*



## FEATURES

- Mono Color (10 colors)
- OHP Sheet Mode
- One-Touch Color Adjustment (4 Kinds)
- Original Size Detection
- Paper Volume Indicators
- Photo Mode
- Reduction/Enlargement (25% to 400%)
- Separate Black and Color Counters
- Sleep Mode
- Stack Feed "Smart" Bypass (130 Sheets)
- Toshiba Inline Color Printing System
- Trimming/Masking
- Weekly Timer
- X-Y Zoom
- Zoom Range (25% to 400%)
- 1,024 Gradations (10 Bit) Scanner

- 2-in-1, 4-in-1 Modes
- 21 Color Copies Per Minute/ 21 Color Prints Per Minute (e-STUDIO210c)
- 31 Color Copies Per Minute/ 31 Color Prints Per Minute (e-STUDIO310c)
- 4,030-Sheet Paper Capacity
- 999 Copy Quantity Selector
- 9,600 x 600 dpi Equivalent Marking Engine

## OPTIONS

- Duplexing (Automatic)
- Fiery® X3e+ Embedded Controller
- Fiery® Z5 Controller
- Hole Punch
- Reversing Automatic Document Feeder (RADF)
- Work Tray

# QUALITY

The Fiery® Z5 combines speed and processing power with a 40 GB Hard Drive and a blazingly fast 866 MHz Pentium® III Processor. Both controllers support Network Printing, Scan-to-Queue, Scan-to-Email, Scan-to-Mailbox with easy web retrieval, and TWAIN-compliant Color Scanning Capabilities and each comes with a powerful suite of software printing solutions.



## ENVIRONMENTAL AND ENERGY SAVING SOLUTIONS

Toshiba is dedicated to reducing chemicals that are harmful to the environment. Approximately 50% of the base materials in the e-STUDIO210c/ 310c

printed circuit board contain no halogen and more than 70% are constructed from lead-free

solder. The e-STUDIO210c/310c saves power with a range of settings and features, including Energy Saver, Sleep Mode, Auto Energy Save, Auto Shut-Off and a time-saving Weekly Timer.

This ensures that minimal power is consumed when the machine is not in use.

The e-STUDIO210c/310c scanner also utilizes an energy-saving xenon lamp that consumes less power during scanning than conventional models.



*Serviceability has never been simpler with newly-developed replaceable Service Maintenance Modules that greatly enhance copier reliability.*

## OUTSTANDING EASE OF SERVICEABILITY

Replaceable Service Modules greatly enhance copier reliability and downtime by allowing periodic preventative maintenance to be performed in less than 60 minutes.

Long Life Consumables and an efficient Electro Photographic Unit (EPU), contains the drum and developer and contributes to an extended 40,000/60,000 Page Monthly Duty Cycle.

Outstanding image quality, advanced document finishing, and complete network printing and scanning capabilities make the e-STUDIO210c and e-STUDIO310c perfect business color solutions. Visit your Authorized Toshiba Dealer today and see one for yourself.



- 1,500-Sheet Large Capacity Feeder
- Optional 4 Position Stapling Finisher
- Optional Saddle-Stitch Finisher
- 600-Sheet Input Cassettes (3)



# SPECIFICATIONS

e-STUDIO210c

e-STUDIO310c

STANDARD MODEL		FIERY® OPTIONS	
Copying Process	Digital Electrostatic Photographic Method (Dry Process)	<b>EFI Fiery® Z5 Controller</b>	Intel® Pentium® 866 MHz Processor 256 MB RAM (Standard), up to 512 MB RAM Memory (RAM) 40.0 GB Hard Disk, Standard CD ROM Drive Disk Drive 10/100BaseT, Optional Token Ring Interface IPX/SPX, TCP/IP Protocols AppleTalk®, Native Novell®, Network OS SMB (Windows® 95, 98, Windows® NT 4.0) Supported OS Supports Windows® 9x, Me, 2000, XP, Windows® NT 4.0, Macintosh® 8.6+ Printer Language PostScript™ 3 (PS, EPS, PDF) Major Print Features Auto Calibration (Copy on e-STUDIO210c/310c Glass), ColorWise™ 3, Command WorkStation™, WebTools™, Scanning DocBuilder™ Pro Option
Copying System	Toshiba Color Inline Printing System: Scan Once/Print Many, Dual Compression Imaging Technology, 4-Beam Laser Unit, Single Pass 4-Drum Tandem Design	<b>Fiery® X3e+ Embedded Controller</b>	Intel® Pentium® 700 MHz CPU Processor 128 MB RAM (Standard) Up to 256 MB RAM (Optional) Memory (RAM) 10.0 GB HDD Hard Disk Drive PostScript™ 3 Printer Language Major Print Features Command WorkStation™, WebTools™, Scanning, Convenient LCD Control Panel
Print Resolution	9,600 x 600 dpi Equivalent Marking Engine; 256 Gradations	<b>OTHER OPTIONS</b>	
Scan Resolution	600 x 600 dpi; 1,024 Gradations	<b>MR-3006A Reversing Automatic Document Feeder (RADF)</b>	Automatic Mode Stack of up to 50 Letter/Letter-R Size Originals, 25 Sheets Legal or Ledger Size Originals (20 Lbs.) Reversing Mode Automatically refeeds Two-Sided Originals for One-Sided Copying or Two-Sided Copying
Type	Console	<b>MD-5007 Automatic Duplexing Unit</b>	Media Size Statement-to-Ledger (17–28 Lbs.)
Copy Speed (e-STUDIO210c)	21 CPM Letter (Color)/31 CPM (Black & White)	<b>MP-1503LT Large Capacity Feeder</b>	Paper Supply 1,500 Sheets Paper Size Letter (17 Lbs. Bond–90 Lbs. Index)
Print Speed (e-STUDIO210c)	21 PPM (Color)/31 PPM (Black & White) (with Optional Fiery® Controller)	<b>MJ-1020 Saddle-Stitch Finisher</b>	Paper Size Ledger-to-Statement-R Tray Capacity (Staple: 28 Lbs., Non-Staple: 140 Lbs. Index) 1st Bin: 1,000 Sheets (LT, ST-R), 500 Sheets (LT-R, LG, LD); 2nd Bin: 1,000 Sheets (LT, ST-R), 500 Sheets (LT-R, LG, LD) Cascade Yes Offset Yes Staple Capacity 50 Sheets (LT), 30 Sheets (LT-R, LG, LD) Saddle-Stitch Paper Size LD, LT-R; Staple Capacity: 15 Sheets (17–20 Lbs.)
Copy Speed (e-STUDIO310c)	31 CPM (Color/Black & White)	<b>MJ-1019 Finisher</b>	Paper Size Ledger-to-Statement-R Tray Capacity (Staple: 28 Lbs., Non-Staple: 140 Lbs. Index) 1st Bin: 1,000 Sheets (LT, ST-R), 500 Sheets (LT-R, LG, LD); 2nd Bin: 1,000 Sheets (LT, ST-R), 500 Sheets (LT-R, LG, LD) Cascade Yes Offset Yes Staple Type Multi-Position (4 Kinds) Staple Capacity 50 Sheets (LT); 30 Sheets (LT-R, LG, LD)
Print Speed (e-STUDIO310c)	31 PPM (Color/Black & White) (with Optional Fiery® Controller)	<b>MJ-6002N Hole Punch Unit (Option for MJ-1019/1020)</b>	Type 2 or 3 Holes
First Copy Out Time*	9.5 Seconds	<b>MY-1020 Cassette Module</b>	Paper Supply 600-Sheet Cassettes (2) Paper Size Statement-R-to-Ledger (17 Lbs. Bond–90 Lbs. Index)
Warm-up Time	4 Minutes	Designs and specifications subject to change without notice. For best results and reliable performance, always use supplies manufactured or designated by Toshiba. Not all Options and Accessories may be available at the time of product launch. Please contact a local Authorized Toshiba Dealership for availability.	
Multiple Copying	Up to 999 Copies		
Reduction/Enlargement	25% to 400%		
Maximum Original Size	Ledger		
Minimum & Maximum Copy Size	Cassette: Ledger/Statement-R (17 Lbs. Bond–90 Lbs. Index) (Letter OHP); Stack Feed "Smart" Bypass: 12" x 18", Statement-R (up to 140 Lbs. Index); Large Capacity Feeder: Letter (17 Lbs. Bond–90 Lbs. Index)		
Maximum Paper Capacity	4,030 Sheets. Cassette: 4 x 600 = 2,400 Large Capacity Feeder: 1,500 Stack Feed "Smart" Bypass: 130		
Displays	LCD that Displays Interactive Screens with Touch Sensitive Keys for Making Copy Job Selections		
Color Modes	Auto Color Selection Mode, Full Color Mode, Black Mode		
Color Image Adjustment	Hue Adjustment, Saturation Adjustment, Color Balance Adjustment, RGB Adjustment, Sharpness Adjustment, Background Adjustment, One Touch Adjustment, Mono Color Adjustment		
Dimensions (H x W x D)	39.4" x 33.3" x 29.6"		
Weight	Approximately 421 Lbs.		
Power Supply	120 Volts, 20A		
Power Consumption	Maximum 2.0 kW		
Photoconductor	Organic Photoconductors (4-Drums)		
Maximum Monthly Duty Cycle	40,000 Pages (e-STUDIO210c), 60,000 Pages (e-STUDIO310c)		
*Single copy via glass from upper Letter cassette without prescan function.			



**TOSHIBA**  
COPY ■ FAX ■ PRINT

**Corporate Office:**  
2 Musick, Irvine, California 92618-1631

**East Coast:**  
959 Route 46 East, 5th Floor, Parsippany, New Jersey 07054  
Tel: (973) 316-2700 Fax: (973) 263-2393

**Midwest:**  
8770 W. Bryn Mawr Avenue, Suite 700, Chicago, Illinois 60631  
Tel: (773) 380-6000 Fax: (773) 380-8077

**South:**  
4855 Peachtree Industrial Blvd., Suite 210, Norcross, Georgia 30092-3024  
Tel: (770) 209-8540 Fax: (770) 209-8556

**West Coast:**  
142 Technology, Suite 150, Irvine, California 92618  
Tel: (949) 462-6262 Fax: (949) 462-2700

**Web Site:**  
www.copiers.toshiba.com or www.fax.toshiba.com

©2002 Toshiba America Business Solutions, Inc., Electronic Imaging Division

AUTHORIZED TOSHIBA DEALER

PRINTED ON RECYCLED PAPER

e-studio210c/310c Brochure/Inv. Code ES210310C1