

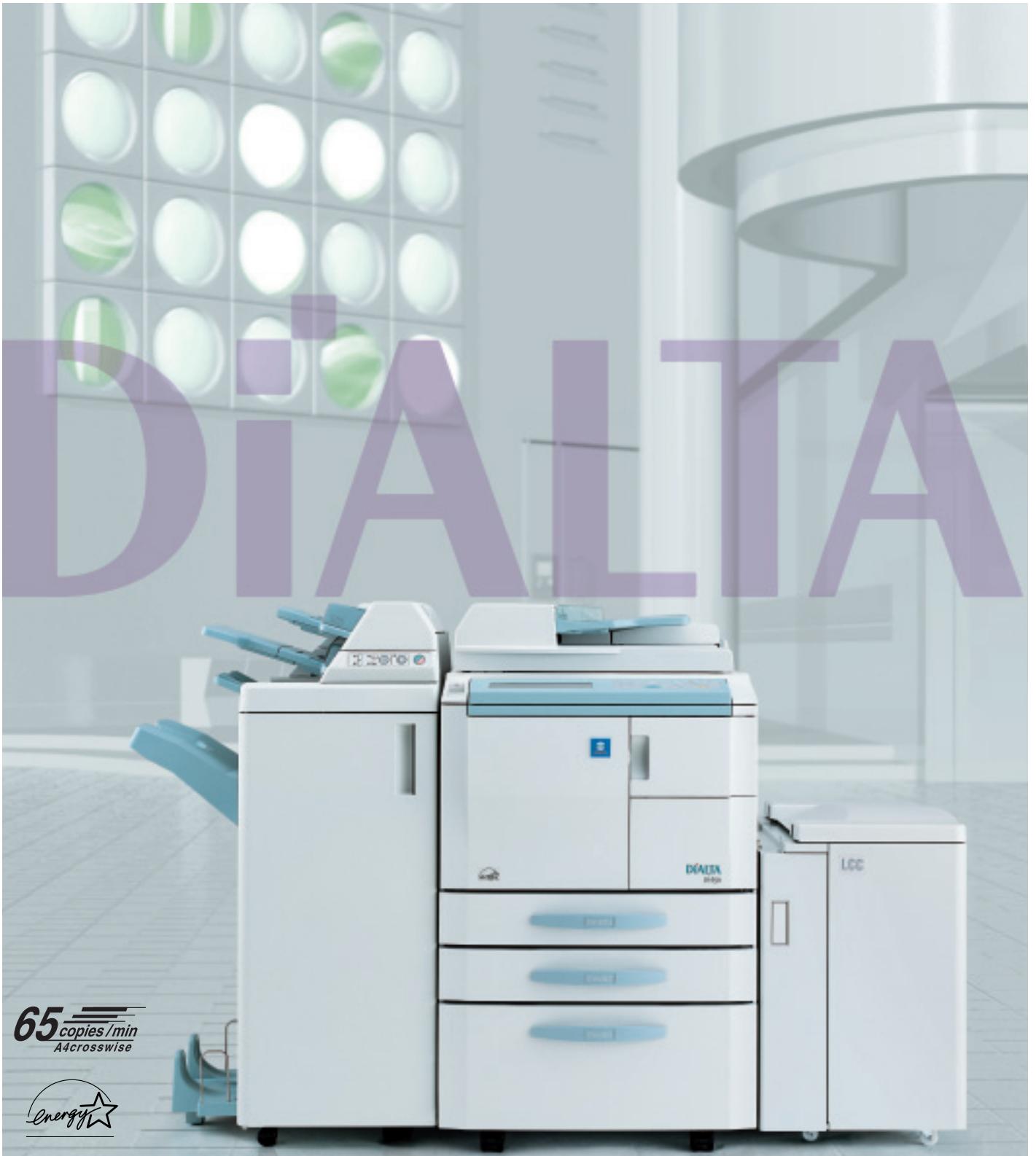


MINOLTA

DiALTA™

Di 650

The essentials of imaging



65  *copies/min*
A4crosswise



The new Di650 multifunctional copier meets professional demands with high-speed digital imaging and advanced finishing functions.

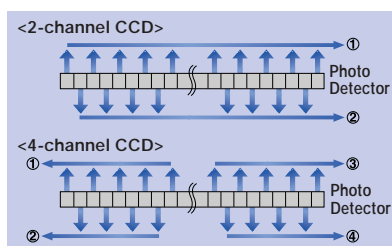
Copy This fast, productive and reliable copier also delivers superb image quality.

High-speed Copies, Plus Productive Finishers

65 pages/min (A4 crosswise) in 600dpi

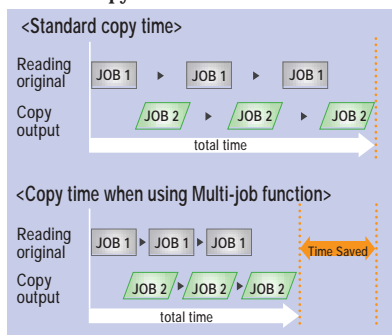
Compared to the previous model*, the Di650 uses a 4-channel CCD system rather than a 2-channel CCD system. Now, image signal transfer time has been halved due to the output line being doubled, thus increasing the scanning speed of originals. As a result, the Di650 achieves a high copying speed of 65 pages/min in 600dpi resolution.

* Minolta Di620



A Multi-job Function for Increased Efficiency

The Multi-Job function continues to read originals even if the Di650 is in the midst of printing another job. The unit can accept a total of 5 jobs simultaneously, for efficient copy work.



A Maximum 6,600 Volume Paper Capacity

The Di650 holds a standard 2,600 sheets of paper. However, with the optional 4,000 sheet Large Capacity Cassette (C-403/C-404), you get a maximum 6,600 sheets of paper.

Universal Cassette Trays That Accept a Variety of Media

All paper cassette trays are universal and accept A5 to A3-wide size paper (314mm x 459mm), which enables you to copy A3 size originals without losing their edges. These cassette trays also accept a variety of media including thick paper (up to 200g/m²) and tabbed paper.

Expandable to a 130 pages/min (A4 crosswise) High-speed Tandem System

Using a 100BASE-TX cross cable that connects two Di650 copiers, the Di650 expands into a tandem system that produces copies at twice the normal speed at 130 pages/min. This greatly increases office productivity.

Multi-functional Finisher Automatically Creates Booklets From Copies

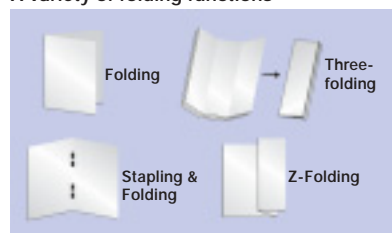
When the optional Finisher (FN-6/FN-113) is attached, the Di650 provides sorting, grouping, folding and stapling functions (A4 crosswise). In addition, the Di650 further enhances copy productivity by way of its automatic copying to booklet making process.

Finishing Function	FN-6	FN-113
Sort	○	○
Group	○	○
1 Parallel staple/1 Oblique staple	○	○
2 Parallel staples	○	○
Punch	○*1	○
Stapling & Folding	○	—
Three-Folding	○	—
Z-Folding	○*2	—

*1 When equipped with the Punch Kit (PK-2/PK-5) or Z-Fold Unit (ZK-2).

*2 When equipped with the Z-Fold Unit (ZK-2).

A variety of folding functions

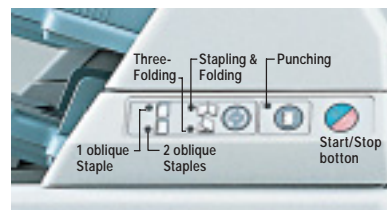


Convenient Cover Inserter B for Booklet Covers

By attaching the optional Cover Inserter B to the Finisher (FN-6), pre-printed or coloured cover sheets set on the Cover Inserter B can be automatically attached to your printouts as booklet covers. You



can also manually staple, punch and/or fold copied paper with the Cover Inserter B.

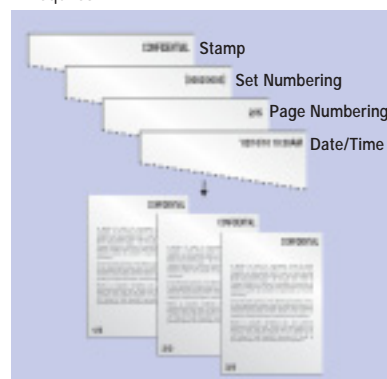


Additional Convenient Functions

Stamp*/Set Numbering/Page Numbering/Date/Time Stamping

You receive a choice of nine areas on a sheet to place stamps. It is also possible to combine a maximum of four stamps per sheet.

* Requires HDD-2





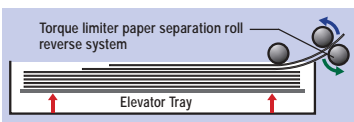
High Reliability Translates into High Productivity

Frame Durability

By adopting a box-like structure in the Di650's base and frame, the unit's durability is increased. This, in turn, improves the machine's overall image quality.

Improved Reliability in the Paper Feed Section

All Di650 paper cassette trays now use an elevating system that pushes paper up in a level manner, by using the entire base of the tray. By maintaining the same angle relationship between the pick-up roller and the paper, regardless of the amount of paper that remains in a tray, paper misfeeds are prevented. Also, even when two or more sheets of paper are simultaneously fed, the torque limiter paper separation roll reverse system will reverse the bottom roller to reverse a sheet. This system helps prevent double feeding as well as paper jams.



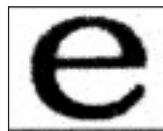
Exceptional Image Quality With High-speed Printing

600dpi-Scanning and Printing, Plus New Polymerised Toner Creates High Image Quality

The Di650 achieves 600dpi high resolution both in scanning and printing, as well as incorporates Minolta's new polymerised toner. As a result, the machine reproduces beautiful fine lines, dots, small letters and halftones for high quality imaging.



Imaging with Di620



Imaging with Di650

Image Quality That Best Suits the Contents of Your Originals

The Di650 features "Auto Mode", which automatically detects text and gradation areas, then chooses the most appropriate process for each. You can also select modes in advance such as "Text Mode", "Photo Mode", and "Increase Contrast Mode", for clearly reproducing letters written in pencil.

Effortless Operability

Easy-to-use Wide LCD Panel With Two Tilt-angles

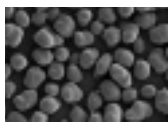
The Di650 has incorporated a wide, logical and easy-to-operate LCD touch-panel. To operate, just select a button on the LCD panel and touch. Furthermore, upon installation, the unit gives you two panel angle setting choices.

Smooth and Easy Open/Close Trays

The Di650 has adopted a cassette tray grip design that enables you to grasp its handles from above, to conveniently open and close even its bottom tray. For smoother operability, the machine also uses bearings in areas such as its paper cassette tray and toner unit drawers.



The Advantages & Features of Polymerised Toner



Polymerised Toner features improved uniformity in terms of particle size (the particle diameter: 6.5µm) and shape, than pulverised toner. This makes the process of copying images onto paper more efficient, reduces toner scattering and improves the reproduction of dots and fine lines. As a result, Polymerised Toner gener-

ates better quality image printing, while saving toner. In addition, it requires less energy in its manufacturing process than toners made by the traditional pulverising method. Furthermore, less energy means the amount of CO₂, NO_x and SO_x emissions, which contribute to global warming and acid rain, are cut by more than 40%.



The DiALTA Di650 Features Minolta CS Digital Technologies

Image quality, Productivity, Operability, Reliability, Connectivity and the Environment. We've reexamined these six features, essential in all business equipment, to create Minolta's unique image information products. The DiALTA Di650, using these innovative CS Digital Technologies, provides efficient document work for complete customer satisfaction.

Network Printer & Scanner

Expandability to a network printer and scanner

Expandable to a network system

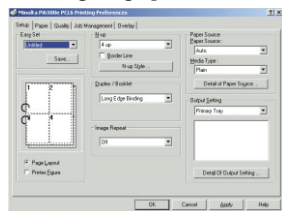
Network Printer Functions

High Performance Network Printer

The Di650 achieves 65 pages/min high-speed printing in multiple-print mode. The unit gives you precise image, graphic and text printouts in 600dpi high resolution. The PCL 6 and optional Adobe PostScript 3 come as printer languages. What's more, the Di650 is compatible to a variety of network environments such as TCP/IP, IPX/SPX and AppleTalk.

GUI Printer Driver

The Di650 comes with easy-to-use printer drivers. The GUI (Graphical User Interface) printer drivers allow you to quickly configure print settings that include finishing functions, just by following the graphics on the drivers' windows.

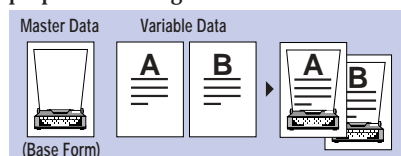


PCL 6

Efficient Network Printer Tools

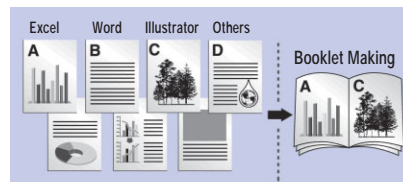
Fiery FreeForm*

Simply store the master data on the printer controller's hard disk drive, then merge it with the variable data as you print. You can instruct the printer to print only the variable data, after which this data will be printed onto your base form. As a result, data output time is drastically shortened. What's more, the documents' master data and variable data can be created in different platforms or applications. This is ideal for diverse printing jobs like customised direct mail and proposals that target customer interests.



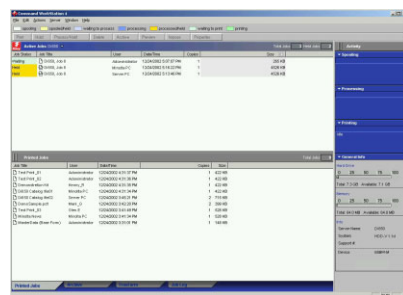
Fiery DocBuilder Pro* (optional)

When binding data stored in the hard disk drive of the printer controller, DocBuilder Pro lets you create a variety of settings such as making two-sided outputs from different applications, exchanging pages, and deleting pages. DocBuilder Pro is the easy way to developing beautiful, professional looking proposals and booklets in-house.



Fiery Command WorkStation

Fiery Command WorkStation (Windows only) gives you centralised control of several Pi6500e or other Fiery units with the easy-to-operate GUI. You can perform a variety jobs such as replacing, deleting, or rearranging pages, as well as saving data on the controller and using RIPPed data thumbnails that show up on the PC monitor.



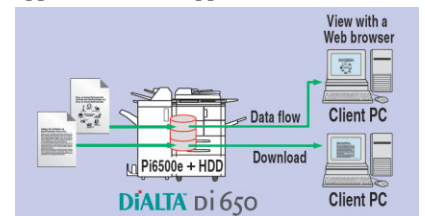
Highly Efficient Scanner*

Network Scanner

The convenient scanner function of the Di650 can scan up to A3 size sheets in 600dpi resolution, at the high speed of 65 pages/min. What's more, you are assured office work efficiency by way of its duplex scanning capabilities.

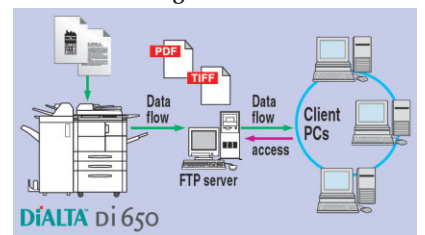
Scan to HDD

Images can be scanned as easily as making copies. Plus, they can be saved in the controller's hard disk without a special server. Client PCs on a network can then view or download the data in PDF or Multi-TIFF format by simply using a Web browser, or applications that support TWAIN.



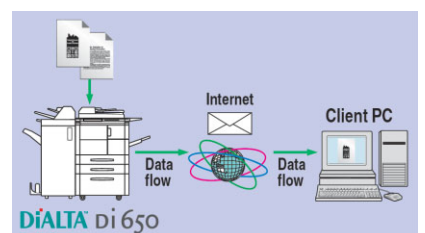
Scan to FTP

Since scanned documents in the FTP server can be shared over the entire network, they can be instantly retrieved when needed. This rapid relaying of information will elevate the power of communication in any office to new heights.



Scan to E-mail

Scanned documents and images can be easily sent as e-mail attachments from the Di650's control panel. This makes it extremely convenient when frequently sending data to designated addresses that are registered on the control panel.



* Requires HDD Option Upgrade Kit for Pi6500e.

Utilities for Easy Printing and Document Management

Network Management Utility allows users to maximise their use of Minolta MFPs in a networked environment. The initial settings required when newly implemented, as well as the burden of everyday maintenance, will decrease significantly to provide a comfortable usage environment. Document Management Utility enables users to easily organise and compile documents created in a variety of applications, as well as for scanned documents. As a result, these utilities help to create and manage a more efficient document workflow for your office.

Network Management Utilities

■ PageScope™ Net Care

This web-based network utility allows the management of all printers having MIB (Management Information Base) under one network umbrella, by displaying them in list form. Administrators can monitor the status and number of daily printouts, as well as the errors and paper jams that have occurred on each printer. Furthermore, networked devices are consistently available to users because the system administrator is able to keep them in optimum working condition.



■ PageScope™ Light

PageScope Light is a web-based network utility for managing Minolta printers on a 1-to-1 (client to printer) basis. Using the web browser, general users can access each Minolta printer on the network and check its status. In addition, it is possible for administrators to conduct basic management functions.



■ Fiery WebTools

Using a Java enabled Web browser, Fiery WebTools are included for easy task management from the client PC.



■ PageScope™ Cabinet

PageScope Cabinet allows a variety of application documents to be managed seamlessly for efficient document workflow. Whether it is scanned or created with a PC, data within a registered folder will be displayed in thumbnail form for easier handling. Also, you can search files easily by using the combination of keywords. Furthermore, printing and e-mailing procedures are completed in effortless drag & drop steps.



Drag & drop

- All functions may not be available concurrently.
- HDD Option Upgrade Kit for P16500e is required for FreeForm, DocBuilder Pro, WebTools and all scanning functions.

Environmentally Committed

The Use of Recycled Materials

Keeping in mind the importance of conservation, recycled materials are used in certain areas of the Di650.


Energy Saving Auto Functions

To conserve energy, the Di650 is programmed to either automatically switch to an energy saving Auto Low Power setting or an Auto Shut-Off setting. Also available is a Weekly Timer that enables you to control the unit's operation time according to the time you set in advance.

Toner Recycle Mechanism

By incorporating a toner recycle structure in the developing unit of the Di650, the generation of waste toner is eliminated.

Meets ENERGY STAR Guidelines

Minolta has designed the Di650 to meet  the stringent guidelines of the International ENERGY STAR Program—a global standard for more efficient energy use.

System Accessories



Cover Inserter B

When attached to the Finisher (FN-6), the insertion of pre-printed or coloured covers during binding is possible.



Finisher (FN-6)

Can sort, group, staple or fold copier and printer printouts.



Z-Fold Unit (ZK-2)

When attached to the Finisher (FN-6), Z-folding and hole punching is possible.



Finisher (FN-113)

Can staple and hole punch sets of up to 50 sheets.



Large Capacity Cassette (C-403)
Holds a maximum 4,000 sheets of A4, B5, Letter and Wide-size paper (314mm × 223mm).



Large Capacity Cassette (C-404)
Holds a maximum 4,000 sheets of A3, B4, A4, Ledger, Legal, Letter and A3-wide size paper (314mm × 459mm).

Punch Kit

(PK-2/PK-5)

When attached to the Finisher (FN-6), hole punching is possible.

Minolta Genuine Consumables and Parts

To ensure the best possible use of our copiers in terms of cost, copy quality and service life, Minolta has extended its technical expertise as a manufacturer of precision equipment to the development and production of high-quality consumables and parts. For optimum performance and productivity, we recommend the use of Minolta's genuine consumables and parts.

Di650 Specifications

Copying System:	Laser Electrostatic
Type:	Console/Stationary Platen
Resolution:	600dpi
Halftone:	256 gradations
Type of Originals:	Sheets, Books, 3-D Objects
Original Size:	Max. A3 (Ledger)
Copy Size:	A3 Wide (314 × 459mm) to A6 (12-1/4" × 18" to 4" × 5-3/4")
Copy Speed:	65 pages/min (A4 Crosswise)
1st Copy:	3.1 seconds or less (A4 Crosswise)
Magnification:	× 0.250 - 4.000 (Preset or Variable)
Exposure Control:	Automatic & Manual
Paper Feeding System:	3 Front-Loading Paper Drawers (500 Sheets × 2 + 1,500 Sheets)
Sheet Bypass:	Multiple Bypass (Up to 100 sheets: A3 Wide to A6)
Multiple Copy:	1 - 9,999, Count-Down, Interruption Capability
Input Materials:	Plain Paper (60-90 g/m ²), Thick Paper (91-200 g/m ²)
Developing System:	Dry, 2-Component, Magnetic Brush System
Photoconductor:	OPC Drum
Toner Supply Control:	Automatic Toner Density Control
Warm-Up Time:	360 seconds or less
Power Consumption:	2.3kW
Dimensions:	650 (W) × 790 (D) × 1,140 (H)mm (25-1/2" × 31" × 45")
Weight:	202kg (445-1/4 lbs.)
Options:	Finisher (FN-6/FN-113) Punch Kit (PK-2/PK-5) Z-Fold Unit (ZK-2) Cover Inserter B Large Capacity Cassette (C-403) Large Capacity Cassette (C-404) Hard Disk Drive Kit (HDD-2) 64MB Memory (M64-1) 128MB Memory (M128-1) 256MB Memory (M256-1) Printer Controller (Pi6500e)

Pi6500e Specifications

General	
Type	Embedded
CPU	Intel Celeron 366MHz
Memory	128MB (Max.)
Operating System	Windows95/98/Me, Windows NT 4.0/2000/XP, Macintosh 8.6/9.x*1
Interface	IEEE1284, Ethernet (10/100BASE-T, RJ-45)
Software	PageScope Light (Embedded), PageScope Net Care, PageScope Network Setup, PageScope EMS Plug-Ins, PageScope NDPS Gateway, PageScope Cabinet
Job Management*2	Fiery Utility: WebTools, FreeForm, Job Marge/Edit, Command Work Station (Windows only), Remote Scan (Windows only), Spooler (Macintosh only), Downloader (Macintosh only)
Print	
Speed	65 pages/min (A4 Crosswise)
Resolution	600dpi × 600dpi
Network Protocol	AppleTalk (EtherTalk), TCP/IP, IPX/SPX (Support NDS), IPP
Printer Language	Standard: PCL 6, PCL 5e Optional: Adobe PostScript 3
Fonts	Standard: PCL Fonts (81 fonts) Optional: PostScript Fonts (136 fonts)
Scan*2	
Speed	65pages/min
Resolution	600dpi × 600dpi
Protocol	TCP/IP, SMTP, FTP
Data Format	PDE, TIFF
Options	HDD Option Upgrade Kit for Pi6500e (6GB) PS Option Upgrade Kit Token Ring Option Kit DocBuilder Pro (Fiery Utility)

*1 Requires the HDD Option Upgrade Kit for Pi6500e or the PS Option Upgrade Kit.

*2 Requires the HDD Option Upgrade Kit for Pi6500e.

Product appearance, configuration and/or specifications are subject to change without notice.

DiALTA and PageScope are registered trademarks or trademarks of KONICA MINOLTA BUSINESS TECHNOLOGIES, INC.

Windows is a registered trademark or trademark of Microsoft Corporation.

Adobe and PostScript are registered trademarks or trademarks of Adobe Systems Incorporated.

All other brand and product names are registered trademarks or trademarks of their respective owners.

* As an ENERGY STAR Partner, KONICA MINOLTA BUSINESS TECHNOLOGIES, INC. has determined that this product meets the ENERGY STAR guidelines for energy efficiency.

* ENERGY STAR is a U.S. registered mark.

**KONICA MINOLTA
BUSINESS TECHNOLOGIES, INC.**

1-6-1 Marunouchi Chiyoda-ku, Tokyo, Japan
http://www.imageinfo.konicaminolta.net



This catalogue was printed using recycled paper and soy ink.

9251-4113-31 0311(E)-D1 Printed in Japan